



***Capsule Villas  
Enlighten the Future***

# INTRODUCTION TO *Capsule Villas*



**Capsule Villas are fully prefabricated, integrated and equipped houses.**

- **Faster And Easier Construction**

Capsule Villas products are manufactured/assembled in factory for about 45 days. Products will be delivered to your designated site. They can be installed within weeks, compared to the average of 8 months for site-built ADU. They also avoid delays caused by weather, labor shortages, or material shortages.

- **Lower Cost**

Capsule Villas products can save you cost on labor, materials. Our product have lower maintenance and energy costs. They also produce less waste and emissions than site-built homes to have better energy efficiency and can incorporate renewable energy sources such as solar panels.

- **Quality Control & Code Compliant**

Capsule Villas products guarantee a high-quality standard, and they meet the strictest Miami Dade Code in the States and local code requirement.

# What Can It Be Used For



## Use It As An ADU

Set up a Capsule Villas product as an ADU in your yard for your family members or guests. Our Capsule Villas products are equipped with all the amenities and features that people would appreciate.

## Use It For Pleasure

Have a Capsule Villas product in your land, sea and enjoy a relaxing vacation whenever you want. Our Capsule Villas products are designed to blend in with the natural surroundings and provide you with comfort and convenience.

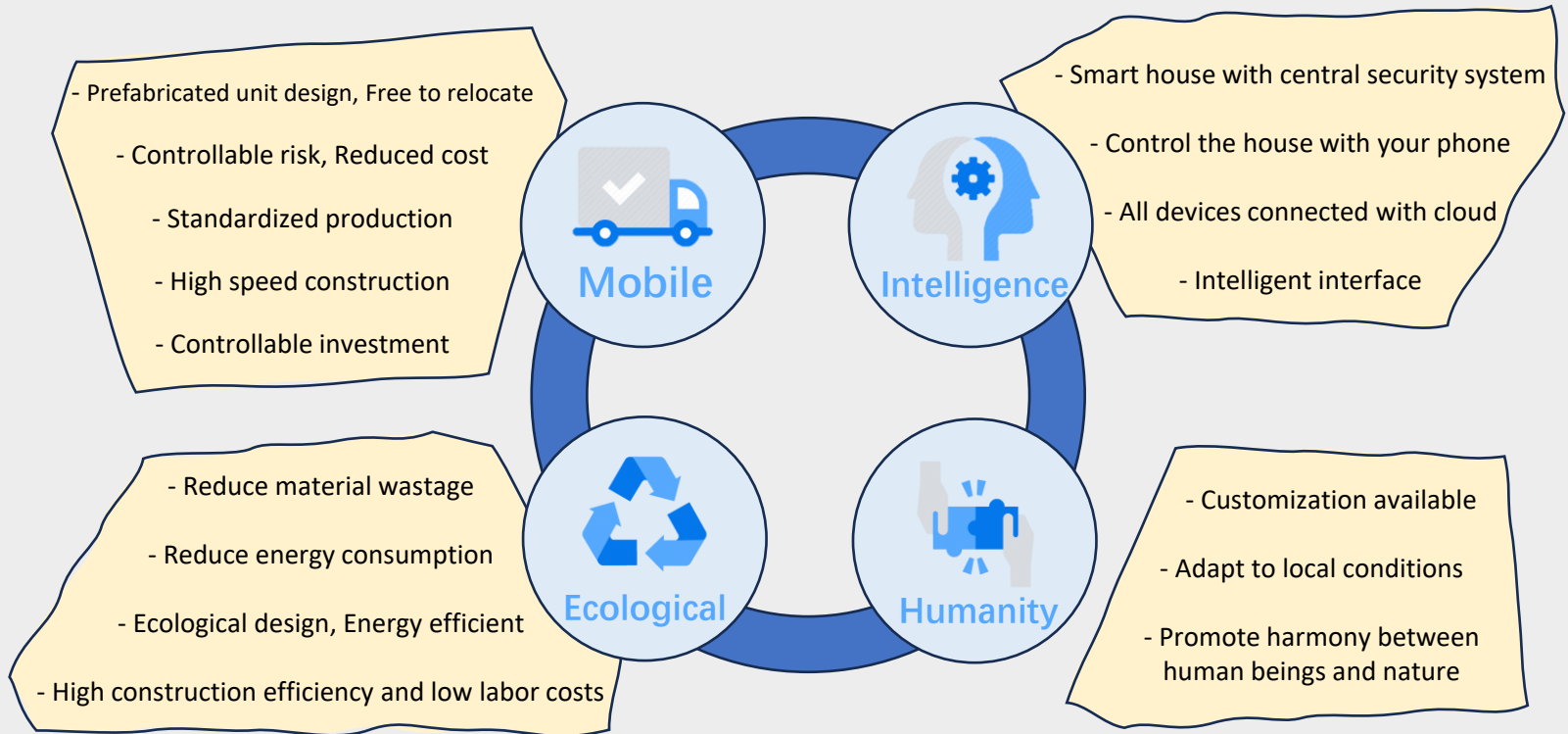


## Use It For Boutique Resort Or Airbnb

Create a boutique resort with Capsule Villas products and attract travelers who are looking for a unique and memorable stay. Our prefabricated products are adaptable to suit your vision and style.

# What Can It Be Used For

# CORE ATTRIBUTES & ADVANTAGES



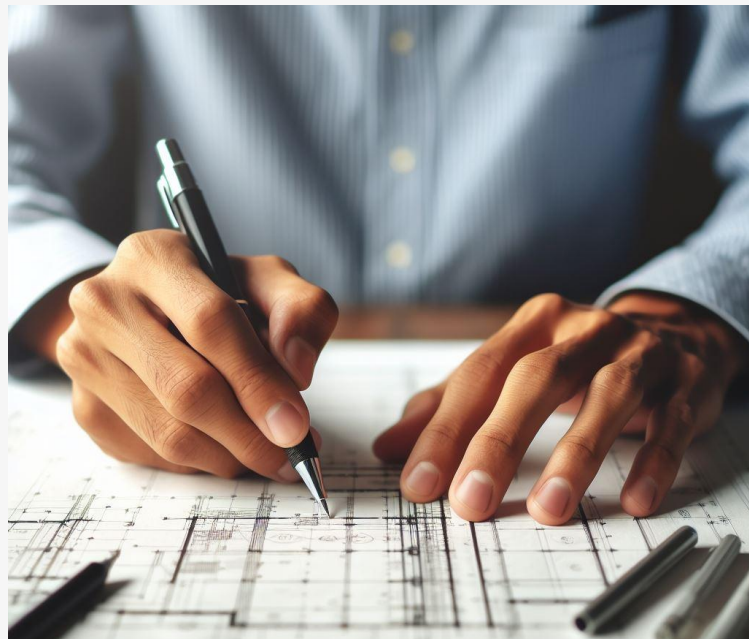


## QUALITY CONTROL

Unlike on-site construction, Capsule Villas are built in factory with controlled construction process. This can speed up the production and avoid delays caused by material shortages or weather conditions,.

## PRACTICAL LAYOUT DESIGN

Blending furniture with high functionality and style, the interior design offers comfort and ergonomics. It enhances the health and well-being of the occupants.



# MANUFACTURER



# SAFETY

Capsule Villas are designed with safety and durability in mind. They can withstand natural disasters such as earthquakes and hurricanes, as well as harsh weather conditions such as humidity. Moreover, they are made of eco-friendly and non-toxic materials that are easy to maintain and clean.

Fireproofing - Capsule Villas products are built with materials that can resist extreme heat. Our windows are made of tempered glass and aluminum alloy frames. The exterior panels are made of aircraft aluminum panel with fluorocarbon coating. The walls are filled with high-density polyurethane insulation.





## COMFORT

Capsule Villas combine space and style in a compact design. Our designers optimized the space with a modern aesthetic touch that makes our product unique. The wall layers are sound-proofed with insulation, giving you a quiet and comfortable environment. Our tempered glass windows are tinted for your privacy. Our products are ready to move in, as they are 100% prefabricated and fully furnished.

## LAYOUT

Our products use bearing-less walls in construction, which boost the interior space by more than 15%. You will enjoy a spacious and compact home that has everything you need.

# ECOLOGY

Our products aims for a sustainable future. We conduct the whole manufacturing process inside the factory, avoiding any environmental damage from construction. 90% of our construction materials are recyclable.

We believe that everything starts at home, so we equip our houses to be eco-friendly. We help our customers live sustainably without any extra hassle. Our houses are small and well-insulated. They can also be customized with solar system add-on, enabling them to be powered by green energy sources, making them almost self-sufficient.



90% of environment-friendly materials



Green construction, only requiring 1% of the water necessary for traditional construction



0.5t standard coal saved



An estimation of 6.8m<sup>3</sup> concrete saved



Building energy efficiency above 85%



90% of the materials used in our construction process are recyclable



1.2t CO<sub>2</sub> emission reduced



An estimation of 9.9m<sup>3</sup> brick saved

# FEATURES



# MATERIAL FEATURES



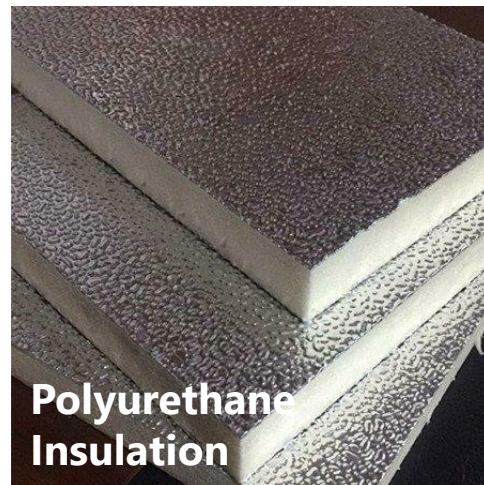
**Galvanized  
Steel  
Structure**

Reinforced galvanized steel structure makes sure that it can withstand high humidity and hot environments, as well as natural disasters such as earthquakes and hurricanes.

The exterior wall panels adopt fluorocarboned aircraft aluminum panels. It can endure over 70 years, and it ensures corrosion resistant & moisture resistant features.



**Fluorocarbon  
Aircraft  
Aluminum  
Alloys**



**Polyurethane  
Insulation**

Polyurethane insulation is applied to ensure fire-proofing, sound-proofing, anti-rust, and yet being eco-friendly.

# STUNNING EXTERIORS

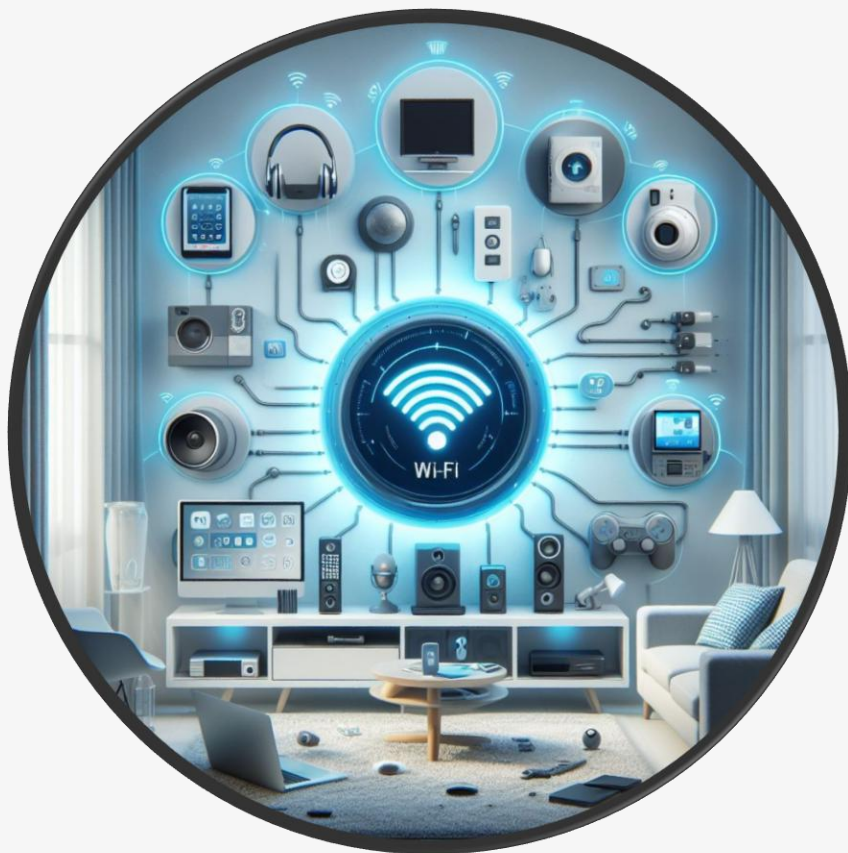


The simplicity yet boldness of this exterior design creates perfect harmony and a stunning outlook.



# AESTHETIC INTERIORS





## SMART HOME SYSTEM

Capsule Villas products are equipped with smart home system. It is a convenient way to automate and control various appliances and devices in the home. You can use a mobile app to adjust the settings of your lights, curtains, thermostat, security cameras, and more. A smart home system can make your life easier, more comfortable.

- Digital lock
- Color-changing ambient lights
- Electric curtains / blinds

You can also request for additional housing assistance such as smart mirror, smart toilet, motion-sensing light system and more.

# STANDARD INTERIOR DECORATION



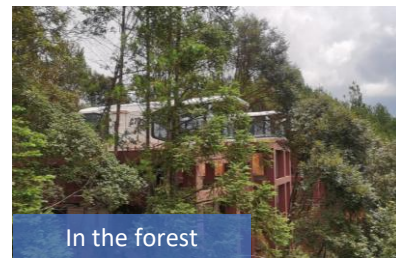
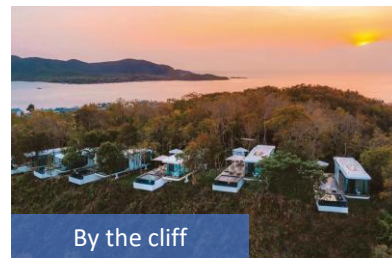
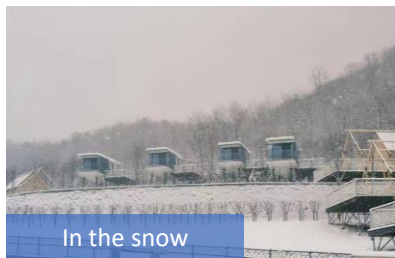
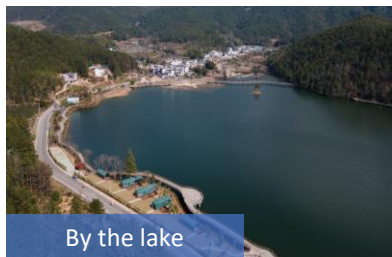
## Standard Configurations

- 01 Aircraft aluminum exterior panel
- 02 Ecological interior decoration material
- 03 Whole house intelligent control system (WHCS)
- 04 Ambient lighting
- 05 Air conditioner
- 06 High-end laminate flooring
- 07 Stereo system
- 08 Elec remote control curtain

## Optional Add-ons

- 01 Elec floor heating
- 02 Pipe frost protection (Elec heat)
- 03 Audio visual equipment (Projector)
- 04 2<sup>nd</sup> floor terrace
- 05 Furniture

# PRODUCT APPLICATION SCENARIOS





# PRODUCT LINES

## *ARK HOMES Series*

- E5
- E6
- E7
- E8
- C90
- S10
- RT

ARK HOMES SERIES

# E5

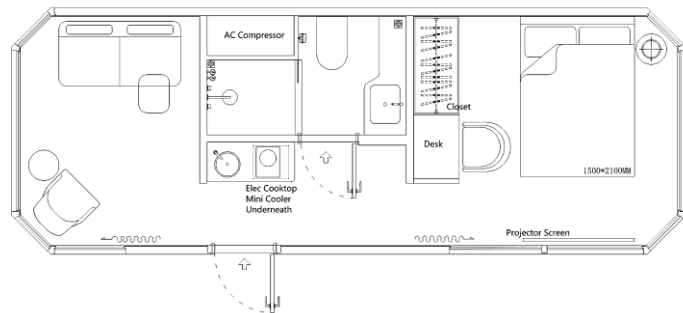
Dimension: 28.9 ft L × 10.8 ft W × 10.5 ft H

Area: 310 sf

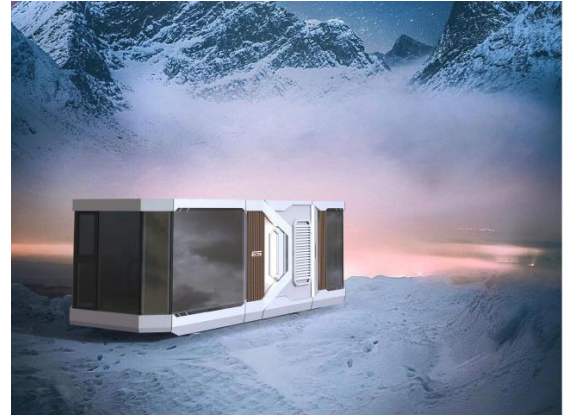
Layout: Living Room, Bedroom, Kitchen, Barcounter, Bathroom

Building Weight: around 15500 lbs

MAX Power: 15.6 KW



Item	Configuration List
Main Structure	Hot-dip galvanized steel frame structure, Exterior panels (Aircraft aluminum panel with fluorocarbon coating), Thermal insulation (High-density Polyurethane Insulation), Panoramic wall curtain glass, Door with intelligent lock
Interior Configuration	Suspended ceiling (bamboo charcoal fiberboard), Interior wall (finishes bamboo charcoal fiberboard), Interior flooring (composite wood flooring), Curtains (curtain panels), Wash basin (quartz stone countertop / ceramic wash basin), Bathroom mirror, Clothes rack (stainless steel material), Elec panel + circuit breaker
Bathroom Configuration	Toilet, Bath shower, Washbasin, Faucet, Paper towel holder, Towel rack, Shower shelf
Basic Appliances	Ducted air conditioner, Elec instant water heater
★ Optional ★	Intelligent voice control system, Pipe frost protection, Projector, Electric towel drying rack, Elec underfloor heating, High-end bed, Leisure sofa
★ Note ★	Customer customization available



# E6

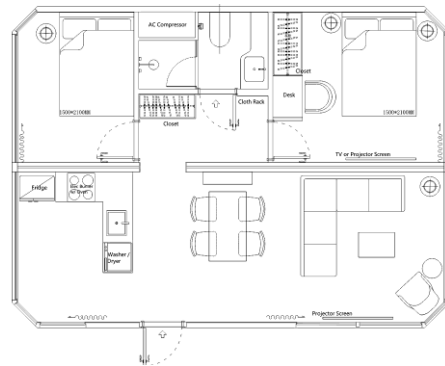
## ARK HOMES SERIES

Dimension: 28.9 ft L × 20.7 ft W × 10.5 ft H

Area: 620 sf

Layout: Living Room, Bedroom, Kitchen, Bar counter, Bathroom

Building Weight: around 30000 lbs



Item	Configuration List
Main Structure	Hot-dip galvanized steel frame structure, Exterior panels (Aircraft aluminum panel with fluorocarbon coating), Thermal insulation (High-density Polyurethane Insulation), Panoramic wall curtain glass, Door with intelligent lock
Interior Configuration	Suspended ceiling (bamboo charcoal fiberboard), Interior wall (finishes bamboo charcoal fiberboard), Interior flooring (composite wood flooring), Curtains (curtain panels), Wash basin (quartz stone countertop / ceramic wash basin), Bathroom mirror, Clothes rack (stainless steel material), Elec panel + circuit breaker
Bathroom Configuration	Toilet, Bath shower, Washbasin, Faucet, Paper towel holder, Towel rack, Shower shelf
Basic Appliances	Ducted air conditioner, Elec instant water heater
★ Optional ★	Intelligent voice control system, Pipe frost protection, Projector, Electric towel drying rack, Elec underfloor heating, High-end bed, Leisure sofa
★ Note ★	Customer customization available



# E7

## ARK HOMES SERIES

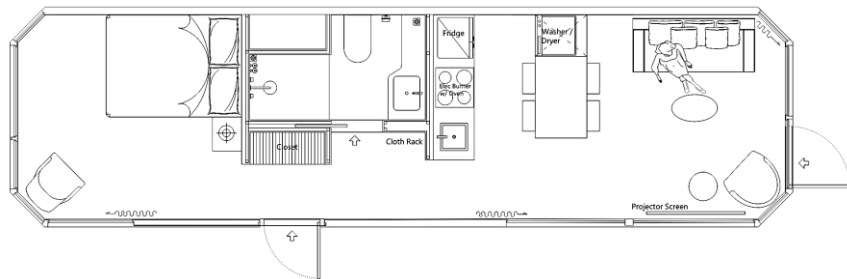
Dimension: 37.7 ft L × 10.8 ft W × 10.5 ft H

Area: 410 sf

Layout: Living Room, Bedroom, Kitchen, Bar counter, Bathroom

Building Weight: around 21,000 lbs

MAX Power: 17.6 KW



Item	Configuration List
Main Structure	Hot-dip galvanized steel frame structure, Exterior panels (Aircraft aluminum panel with fluorocarbon coating), Thermal insulation (High-density Polyurethane Insulation), Panoramic wall curtain glass, Door with intelligent lock
Interior Configuration	Suspended ceiling (bamboo charcoal fiberboard), Interior wall (finishes bamboo charcoal fiberboard), Interior flooring (composite wood flooring), Curtains (curtain panels), Wash basin (quartz stone countertop / ceramic wash basin), Bathroom mirror, Clothes rack (stainless steel material), Elec panel + circuit breaker
Bathroom Configuration	Toilet, Bath shower, Washbasin, Faucet, Paper towel holder, Towel rack, Shower shelf
Basic Appliances	Ducted air conditioner, Elec instant water heater
★ Optional ★	Intelligent voice control system, Pipe frost protection, Projector, Electric towel drying rack, Elec underfloor heating, High-end bed, Leisure sofa
★ Note ★	Customer customization available



# E8

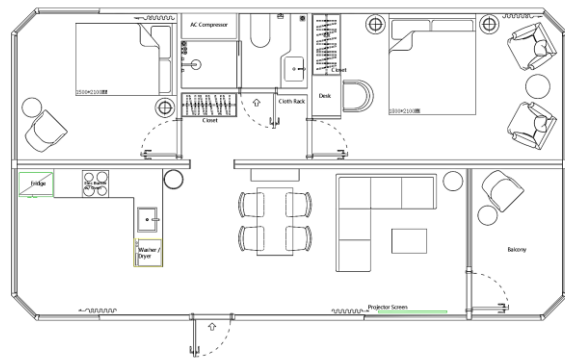
## ARK HOMES SERIES

Dimension: 37.7 ft L × 22.7 ft W × 10.5 ft H

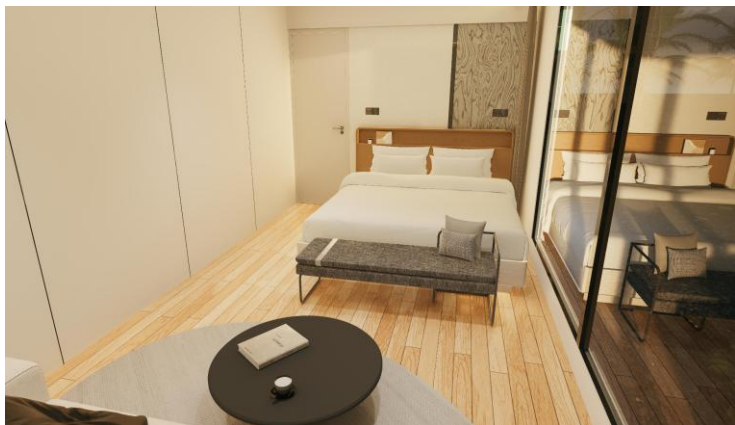
Area: 820 sf

Layout: Living Room, Bedroom, Kitchen, Bar counter, Bathroom

Building Weight: around 40,000 lbs



Item	Configuration List
Main Structure	Hot-dip galvanized steel frame structure, Exterior panels (Aircraft aluminum panel with fluorocarbon coating), Thermal insulation (High-density Polyurethane Insulation), Panoramic wall curtain glass, Door with intelligent lock
Interior Configuration	Suspended ceiling (bamboo charcoal fiberboard), Interior wall (finishes bamboo charcoal fiberboard), Interior flooring (composite wood flooring), Curtains (curtain panels), Wash basin (quartz stone countertop / ceramic wash basin), Bathroom mirror, Clothes rack (stainless steel material), Elec panel + circuit breaker
Bathroom Configuration	Toilet, Bath shower, Washbasin, Faucet, Paper towel holder, Towel rack, Shower shelf
Basic Appliances	Ducted air conditioner, Elec instant water heater
★ Optional ★	Intelligent voice control system, Pipe frost protection, Projector, Electric towel drying rack, Elec underfloor heating, High-end bed, Leisure sofa
★ Note ★	Customer customization available



# S10

## ARK HOMES SERIES

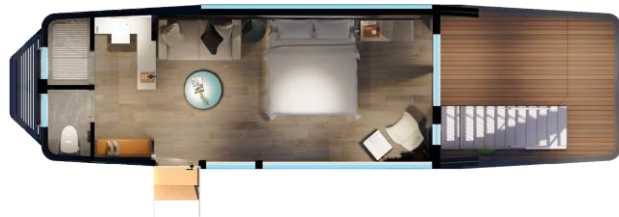
Dimension: 41 ft L × 11.5 ft W × 11.2 ft H

Area: 470 sf

Layout: Living Room, Bedroom, Kitchen, Bar counter, Bathroom, Balcony,  
2<sup>nd</sup> floor Terrace

Building Weight: around 29800 lbs

MAX Power: 17.6 KW



Item	Configuration List
Main Structure	Steel structure, Exterior panels (aircraft aluminum panel with fluorocarbon coating), Thermal insulation (polyurethane insulation), Exterior glazing, Entry door (smart access control), Balcony door (swing door), Window & screening, Home unit support
Interior Configuration	Ceiling (high-end bamboo charcoal fiberboard), Walls (high-end bamboo charcoal fiberboard), Illuminated backdrop, Floor (high-grade laminated wood flooring), Indoor light effects (spotlights + strip lights), Outdoor waterproof light strip, Remote control curtains, Switch panels, Smoke detector, Elec panel
2 <sup>nd</sup> Floor Terrace Configuration	Awning, Railing, Ambient lighting, Stairs
Bathroom Configuration	Toilet, Bath shower, Washbasin, Faucet, Paper towel holder, Towel rack, Shower shelf, mirror
Equipment & Appliances	Ducted air conditioner, Instant water heater
Standard Features	Intelligent voice control system, Pipe frost protection, Wine cup holder, Clothes rack, Elec water kettle, Storage Bench
★ Optional ★	Projector, Electric towel drying rack, Elec underfloor heating, High-end bed, Leisure sofa
★ Note ★	Customer customization available



# C90 With Balcony

Dimension: 38.1 ft L × 10.8 ft W × 11.2 ft H

Area: 409 sf

Layout: Living Room, Bedroom, Bar counter, Bathroom, Balcony

Building Weight: around 21000 lbs

MAX Power: 17.6 KW



Item	Configuration List
Main Structure	Steel Structure, Exterior panels (aircraft aluminum panel with fluorocarbon coating), Thermal insulation (polyurethane insulation), Exterior glazing, Skylight glass, Entry door (smart access control), Balcony door (swing door), Window & screening, Home unit support
Interior Configuration	Ceiling (high-end bamboo charcoal fiberboard), Walls (high-end bamboo charcoal fiberboard), Floor (high-grade laminated wood flooring), Indoor light effects (spotlights + strip lights), Outdoor waterproof light strip, Remote control curtains, Switch panels, Smoke detector, Elec panel, Equipment cabinet
Bathroom Configuration	Toilet, Bath shower, Washbasin, Faucet, Paper towel holder, Towel rack, Shower shelf, mirror
Basic Appliances	Ducted air conditioner, Instant water heater
Standard Features	Intelligent voice control system, Pipe frost protection, Clothes rack, Elec water kettle, Certificate of Conformity, Instruction Manual, Product Transportation Protection
★ Optional ★	Projector, Electric towel drying rack, Elec underfloor heating, High-end bed, Leisure sofa
★ Note ★	Customer customization available



# RT Trailer

## ARK HOMES SERIES

Dimension: 19 ft L × 7.1 ft W × 8 ft H

Area: 135 sf

Layout: Living Room, Bedroom, Bathroom

Building Weight: around 6,614 lbs

MAX Power: 13.8 KW



Item	Configuration List
Main Structure	Hot-dip galvanized steel frame structure, Exterior panels (Aircraft aluminum panel with fluorocarbon coating), Thermal insulation (High-density Polyurethane Insulation), Door with intelligent lock
Interior Configuration	Suspended ceiling (bamboo charcoal fiberboard), Interior wall (finishes bamboo charcoal fiberboard), Interior flooring (composite wood flooring), Curtains (curtain panels), Wash basin (quartz stone countertop / ceramic wash basin), Bathroom mirror, Clothes rack (stainless steel material), Elec panel + circuit breaker
Bathroom Configuration	Toilet, Bath shower, Washbasin, Faucet, Paper towel holder, Towel rack, Shower shelf
Basic Appliances	AC, Elec instant water heater
★ Optional ★	Intelligent voice control system, Pipe frost protection, Projector, Electric towel drying rack, Elec underfloor heating, High-end bed, Leisure sofa
★ Note ★	Customer customization available



# APPLE CAPSULE SERIES

## PRODUCT LINES

### *Apple Capsule Series*

- H10
- B70
- B80
- M10B



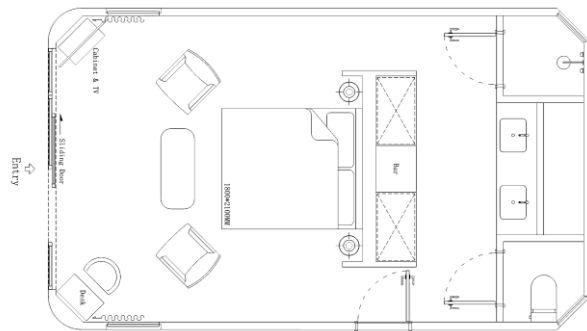
# H10

Designed for Luxury Hotel Key

Dimension: 26.6 ft L × 15.8 ft W × 9.4 ft H

Area: 420 sf

Layout: Living Room, Bedroom, Bathroom



Item	Configuration List
Main Structure	Hot-dip galvanized steel frame structure, Exterior panels (Aircraft aluminum panel with fluorocarbon coating), Thermal insulation (High-density Polyurethane Insulation), Panoramic wall curtain glass, Door with intelligent lock
Interior Configuration	Suspended ceiling (bamboo charcoal fiberboard), Interior wall (finishes bamboo charcoal fiberboard), Interior flooring (composite wood flooring), Curtains (curtain panels), Wash basin (quartz stone countertop / ceramic wash basin), Bathroom mirror, Clothes rack (stainless steel material), Elec panel + circuit breaker
Bathroom Configuration	Toilet, Bath shower, Washbasin, Faucet, Paper towel holder, Towel rack, Shower shelf
Basic Appliances	Ducted air conditioner, Elec Instant Water Heater
★ Optional ★	Intelligent voice control system, Pipe frost protection, Projector, Electric towel drying rack, Elec underfloor heating, High-end bed, Leisure sofa
★ Note ★	Customer customization available





# B70

Dimension: 32.8 ft L × 10.8 ft W × 10.5 ft H

Area: 355 sf

Layout: Multi purpose use, such as office, sales room, lounge or living space

Building Weight: around 15,000 lbs



CATEGORY	CONFIGURATION LIST
Main structure	Steel structure frame, exterior decoration panel, thermal insulation (100mm polyurethane insulation layer), external glass, entrance door (high-grade aluminum alloy door)
Built-in configuration	Ceiling (bamboo charcoal fiberboard), wall (bamboo charcoal fiberboard), floor (PVC composite floor), indoor light effect (downlight + linear light), outdoor light effect (waterproof light belt), curtain (manual curtain), background music, socket panel (brand switch panel)
Equipment	Air conditioning
★ Optional ★	Floor heating (electric floor heating), water pipe anti-freezing
★ Remark ★	Open customer customization requirements (specific solutions need to be discussed)

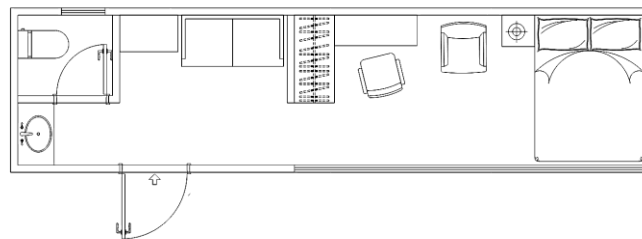
# B80

Dimension: 28.8 ft L × 7.3 ft W × 10.5 ft H

Area: 210 sf

Layout: Living Room, Bedroom, Bathroom

Building Weight: around 15,000 lbs



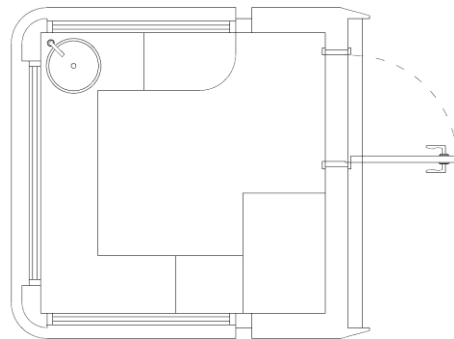
CATEGORY	CONFIGURATION LIST
Main structure	Steel structure frame, exterior decoration panel, thermal insulation (100mm polyurethane insulation layer), external glass, entrance door (high-grade aluminum alloy door)
Built-in configuration	Ceiling (bamboo charcoal fiberboard), wall (bamboo charcoal fiberboard), floor (PVC composite floor), indoor light effect (downlight + linear light), outdoor light effect (waterproof light belt), curtain (manual curtain), background music, socket panel (brand switch panel)
Equipment	Air conditioning
★ Optional ★	Floor heating (electric floor heating), water pipe anti-freezing
★ Remark ★	Open customer customization requirements (specific solutions need to be discussed)

# M10B

Dimension: 7 ft L × 8.2 ft W × 8 ft H

Area: 58 sf

Layout: Barcounter



Item	Configuration List
Main Structure	Hot-dip galvanized steel frame structure, Exterior panels (Aircraft aluminum panel with fluorocarbon coating), Thermal insulation (High-density Polyurethane Insulation), Door
Interior Configuration	Suspended ceiling (bamboo charcoal fiberboard), Interior wall (finishes bamboo charcoal fiberboard), Interior flooring (composite wood flooring), Curtains (curtain panels), Wash basin, Elec panel + circuit breaker
★ Optional ★	
★ Note ★	Customer customization available



# PRODUCT LINES

## *Getaway Cabin Series*

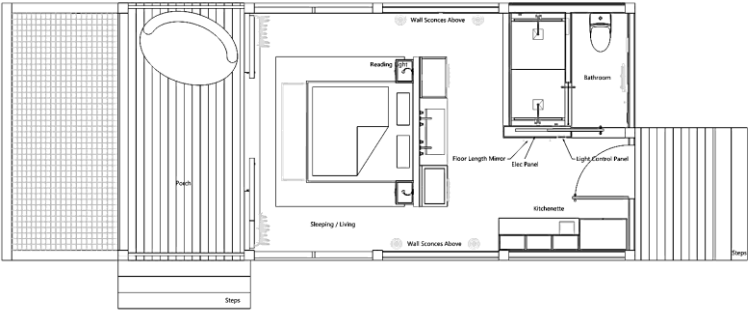
- N50 Cabin
- N60 Cabin
- N70 Cabin

GETAWAY CABIN SERIES

# N50 Cabin

## Beach Bungalow

Dimension: 32 ft L × 16 ft W × 9.5 ft H, 18 ft to top of pitch roof  
Area: 515 sf (Including 125 sf porch area)  
Layout: Living Room, Bedroom, Kitchen, Bathroom



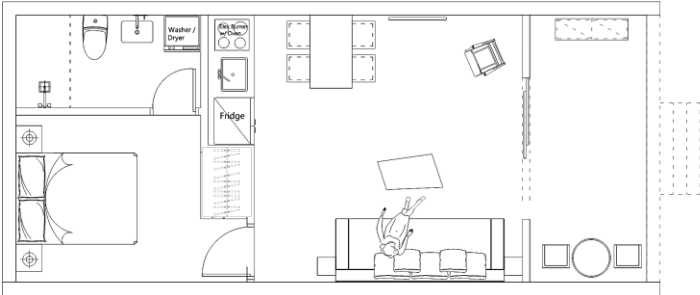
Item	Configuration List
Main Structure	Hot-dip galvanized steel frame structure, Exterior (wood style finish), Thermal insulation (High-density Polyurethane Insulation), Door with intelligent lock
Interior Configuration	Interior wall (finishes bamboo charcoal fiberboard), Interior flooring (composite wood flooring), Curtains (curtain panels), Wash basin (quartz stone countertop / ceramic wash basin), Bathroom mirror, Clothes rack (stainless steel material), Elec panel + circuit breaker
Bathroom Configuration	Toilet, Bath shower, Washbasin, Faucet, Paper towel holder, Towel rack, Shower shelf
Basic Appliances	AC, Elec Instant Water Heater
★ Optional ★	Intelligent voice control system, Pipe frost protection, Projector, Electric towel drying rack, Elec underfloor heating, High-end bed, Leisure sofa
★ Note ★	Customer customization available

# N60 Cabin

Dimension: 35.5 ft L × 15.8 ft W × 10.5 ft H

Area: 560 sf

Layout: Living Room, Kitchen, Bedroom, Bathroom



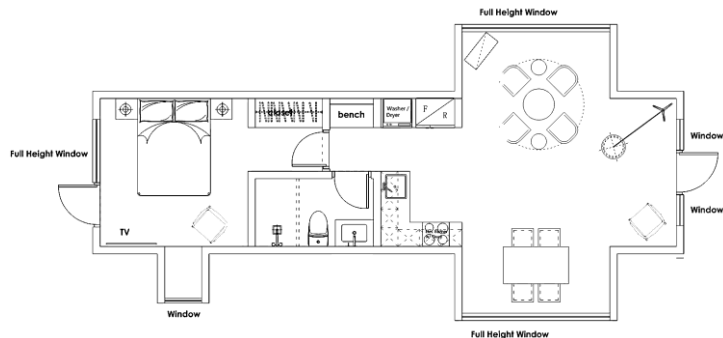
Item	Configuration List
Main Structure	Hot-dip galvanized steel frame structure, Exterior (Multi choice for Exterior finishes, such as stucco, cement board or wood siding), Thermal insulation (High-density Polyurethane Insulation), Panoramic wall curtain glass, Door with intelligent lock, Metal roof
Interior Configuration	Suspended ceiling (bamboo charcoal fiberboard), Interior wall (finishes bamboo charcoal fiberboard), Interior flooring (composite wood flooring), Curtains (curtain panels), Wash basin (quartz stone countertop / ceramic wash basin), Bathroom mirror, Clothes rack (stainless steel material), Elec panel + circuit breaker, Kitchen cabinets
Bathroom Configuration	Toilet, Bath shower, Washbasin, Faucet, Paper towel holder, Towel rack, Shower shelf
Basic Appliances	AC, Elec Instant Water Heater, Refrigerator, Washer/dryer, Cooktop
★ Optional ★	Intelligent voice control system, Pipe frost protection, Projector, Electric towel drying rack, Elec underfloor heating, High-end bed, Leisure sofa
★ Note ★	Customer customization available

# N70 Cabin

Dimension: 40 ft L × 20 ft W × 10.5 ft H

Area: 550 sf

Layout: Living Room, Kitchen, Bedroom, Bathroom



Item	Configuration List
Main Structure	Hot-dip galvanized steel frame structure, Exterior (Multi choice for Exterior finishes, such as stucco, cement board or wood siding), Thermal insulation (High-density Polyurethane Insulation), Panoramic wall curtain glass, Door with intelligent lock, Metal roof
Interior Configuration	Suspended ceiling (bamboo charcoal fiberboard), Interior wall (finishes bamboo charcoal fiberboard), Interior flooring (composite wood flooring), Curtains (curtain panels), Wash basin (quartz stone countertop / ceramic wash basin), Bathroom mirror, Clothes rack (stainless steel material), Elec panel + circuit breaker, Kitchen cabinets
Bathroom Configuration	Toilet, Bath shower, Washbasin, Faucet, Paper towel holder, Towel rack, Shower shelf
Basic Appliances	AC, Elec Instant Water Heater, Refrigerator, Washer/dryer, Cooktop
★ Optional ★	Intelligent voice control system, Pipe frost protection, Projector, Electric towel drying rack, Elec underfloor heating, High-end bed, Leisure sofa
★ Note ★	Customer customization available





# PRODUCT LINES

## *Economic Series*

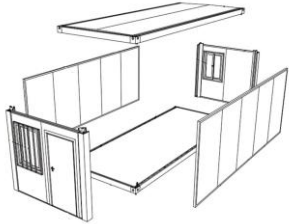
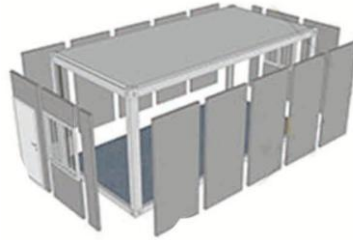
- Foldable Unit
- Staff Housing
- Expandable Cabin

ECONOMIC SERIES

# *Staff Housing*



Unit Main Structure



Prefabricated Parts



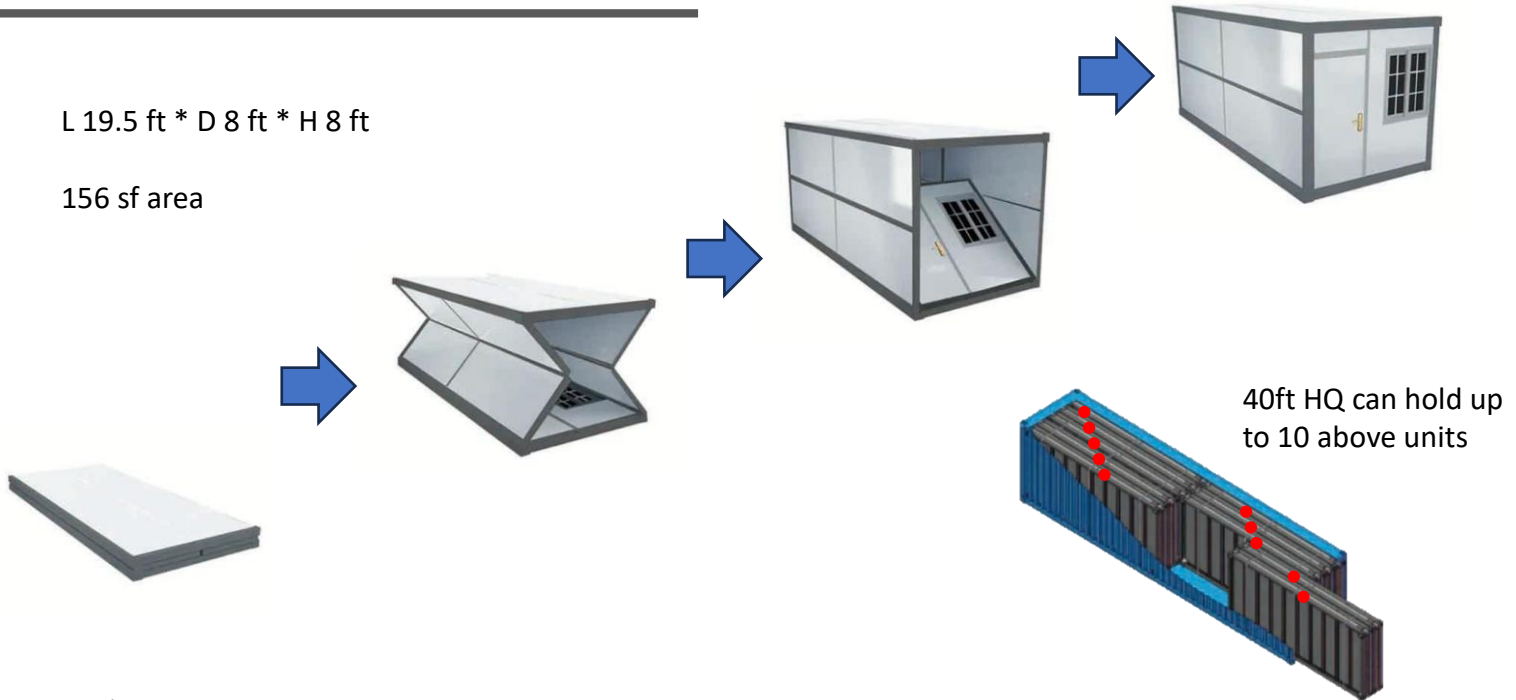
Staff Housing

# ***Foldable Unit***

---

L 19.5 ft \* D 8 ft \* H 8 ft

156 sf area



# ***Expandable Cabin***

---

- Easy and fast installation
- 2 men, 15 min = 1 unit
- Dimensions: 20.7 ft by 19.4



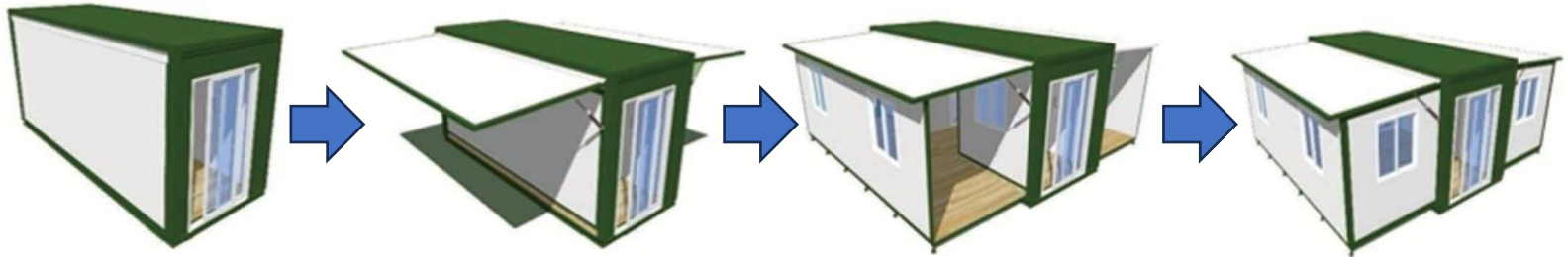
1B1B



2B1B



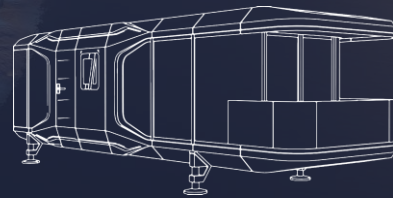
3B1B







# CONTACT US



Phone (USA)

(201) 841-3850

Phone (Bahamas)

(242) 828-0666



Website

[www.capsulevillas.net](http://www.capsulevillas.net)