

***Capsule Villas
Enlighten the Future***

INTRODUCTION TO *Capsule Villas*



Capsule Villas are fully prefabricated, integrated and equipped houses.

- **Faster And Easier Construction**

Capsule Villas products are manufactured/assembled in factory for about 45 days. Products will be delivered to your designated site. They can be installed within weeks, compared to the average of 8 months for site-built ADU. They also avoid delays caused by weather, labor shortages, or material shortages.

- **Lower Cost**

Capsule Villas products can save you cost on labor, materials. Our product have lower maintenance and energy costs. They also produce less waste and emissions than site-built homes to have better energy efficiency and can incorporate renewable energy sources such as solar panels.

- **Quality Control & Code Compliant**

Capsule Villas products guarantee a high-quality standard, and they meet the strictest Miami Dade Code in the States and local code requirement.

What Can It Be Used For



Use It As An ADU

Set up a Capsule Villas product as an ADU in your yard for your family members or guests. Our Capsule Villas products are equipped with all the amenities and features that people would appreciate.

Use It For Pleasure

Have a Capsule Villas product in your land and enjoy a relaxing vacation whenever you want. Our Capsule Villas products are designed to blend in with the natural surroundings and provide you with comfort and convenience.

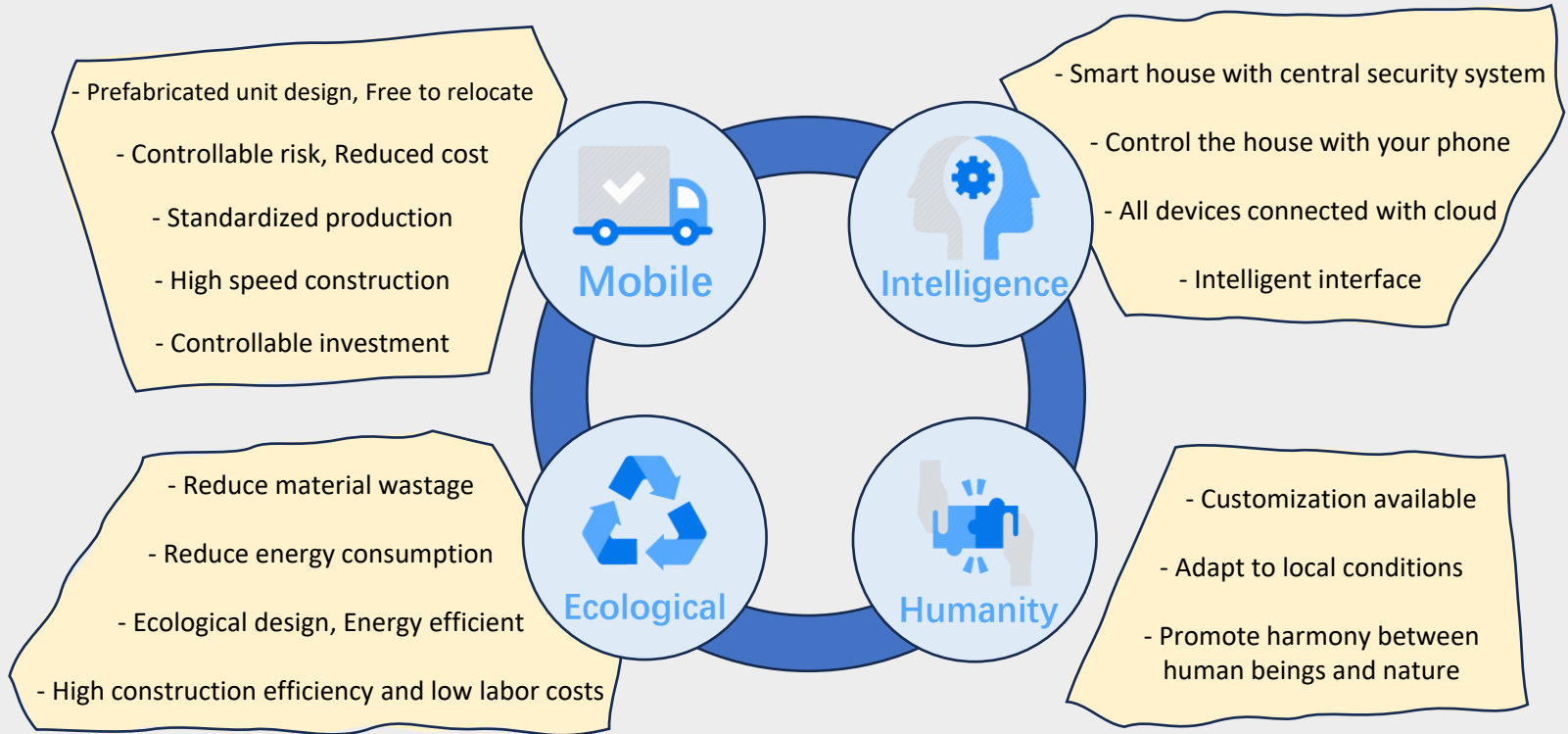


Use It For Boutique Resort Or Airbnb

Create a boutique resort with Capsule Villas products and attract travelers who are looking for a unique and memorable stay. Our prefabricated products are adaptable to suit your vision and style.

What Can It Be Used For

CORE ATTRIBUTES & ADVANTAGES



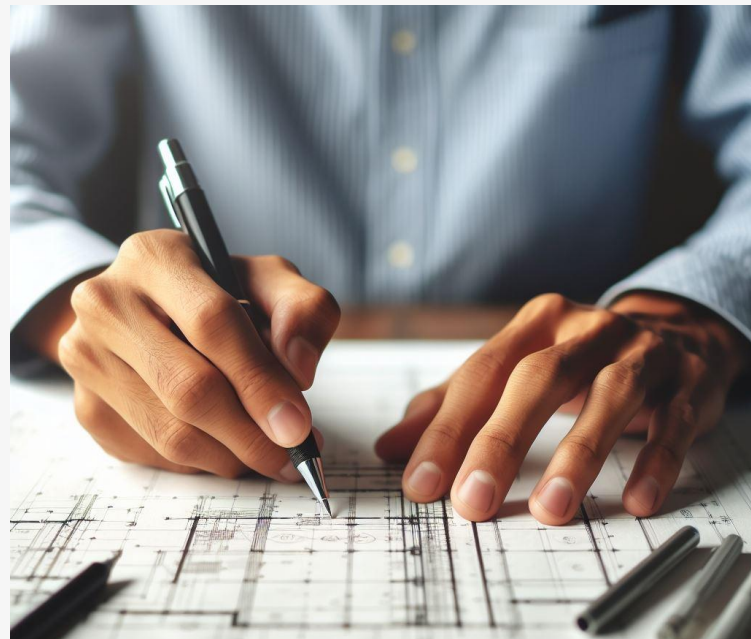


QUALITY CONTROL

Unlike on-site construction, Capsule Villas are built in factory with controlled construction process. This can speed up the production and avoid delays caused by material shortages or weather conditions,.

PRACTICAL LAYOUT DESIGN

Blending furniture with high functionality and style, the interior design offers comfort and ergonomics. It enhances the health and well-being of the occupants.



MANUFACTURER



SAFETY

Capsule Villas are designed with safety and durability in mind. They can withstand natural disasters such as earthquakes and hurricanes, as well as harsh weather conditions such as humidity. Moreover, they are made of eco-friendly and non-toxic materials that are easy to maintain and clean.

Fireproofing - Capsule Villas products are built with materials that can resist extreme heat. Our windows are made of tempered glass and aluminum alloy frames. The exterior panels are made of aircraft aluminum panel with fluorocarbon coating. The walls are filled with high-density polyurethane insulation.





COMFORT

Capsule Villas combine space and style in a compact design. Our designers optimized the space with a modern aesthetic touch that makes our product unique. The wall layers are sound-proofed with insulation, giving you a quiet and comfortable environment. Our tempered glass windows are tinted for your privacy. Our products are ready to move in, as they are 100% prefabricated and fully furnished.

LAYOUT

Our products use bearing-less walls in construction, which boost the interior space by more than 15%. You will enjoy a spacious and compact home that has everything you need.

ECOLOGY

Our products aims for a sustainable future. We conduct the whole manufacturing process inside the factory, avoiding any environmental damage from construction. 90% of our construction materials are recyclable.

We believe that everything starts at home, so we equip our houses to be eco-friendly. We help our customers live sustainably without any extra hassle. Our houses are small and well-insulated. They can also be customized with solar system add-on, enabling them to be powered by green energy sources, making them almost self-sufficient.



90% of environment-friendly materials



Green construction, only requiring 1% of the water necessary for traditional construction



0.5t standard coal saved



An estimation of 6.8m³ concrete saved



Building energy efficiency above 85%



90% of the materials used in our construction process are recyclable



1.2t CO₂ emission reduced



An estimation of 9.9m³ brick saved

FEATURES



MATERIAL FEATURES



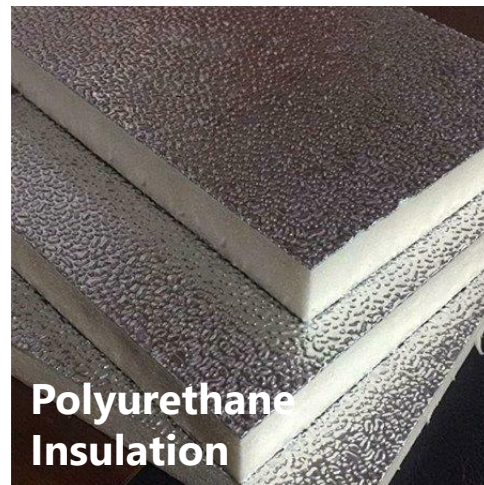
**Galvanized
Steel
Structure**

Reinforced galvanized steel structure makes sure that it can withstand high humidity and hot environments, as well as natural disasters such as earthquakes and hurricanes.

The exterior wall panels adopt fluorocarboned aircraft aluminum panels. It can endure over 70 years, and it ensures corrosion resistant & moisture resistant features.



**Fluorocarbon
Aircraft
Aluminum
Alloys**



**Polyurethane
Insulation**

Polyurethane insulation is applied to ensure fire-proofing, sound-proofing, anti-rust, and yet being eco-friendly.

STUNNING EXTERIORS

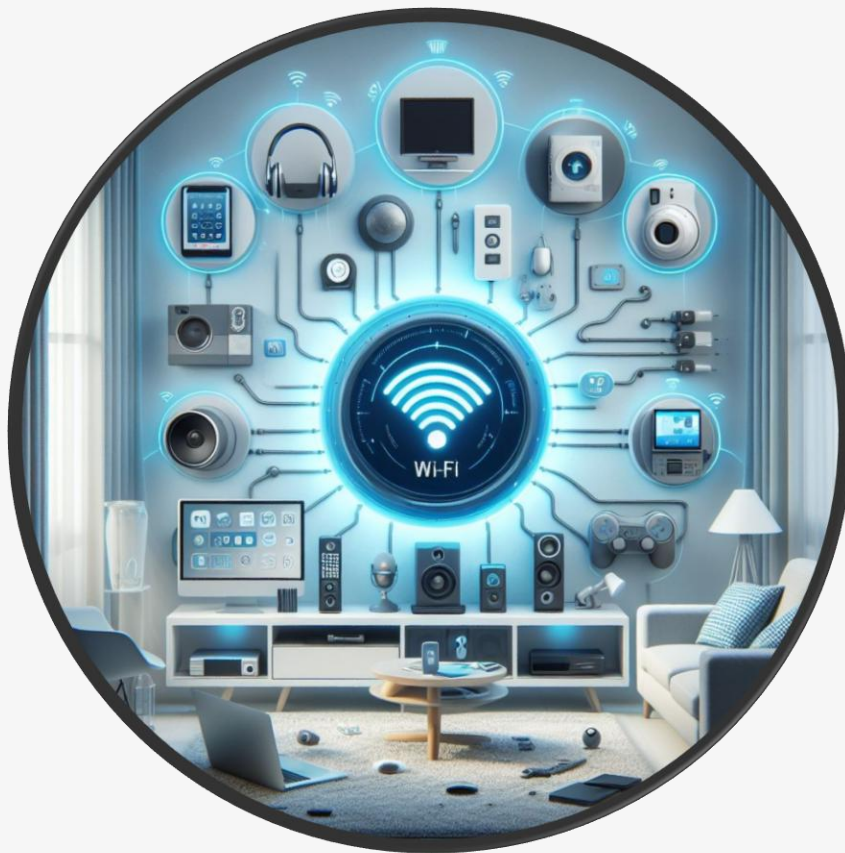


The simplicity yet boldness of this exterior design creates perfect harmony and a stunning outlook.



AESTHETIC INTERIORS





SMART HOME SYSTEM

Capsule Villas products are equipped with smart home system. It is a convenient way to automate and control various appliances and devices in the home. You can use a mobile app to adjust the settings of your lights, curtains, thermostat, security cameras, and more. A smart home system can make your life easier, more comfortable.

- Digital lock
- Color-changing ambient lights
- Electric curtains / blinds

You can also request for additional housing assistance such as smart mirror, smart toilet, motion-sensing light system and more.

STANDARD INTERIOR DECORATION



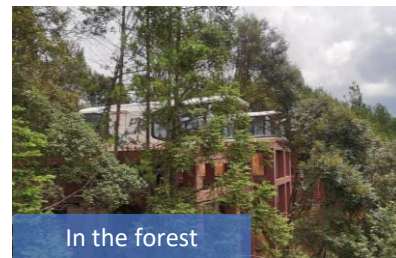
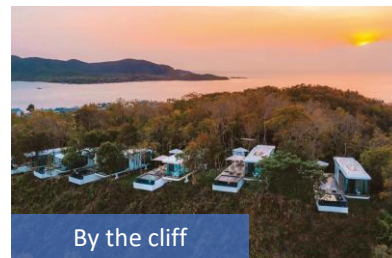
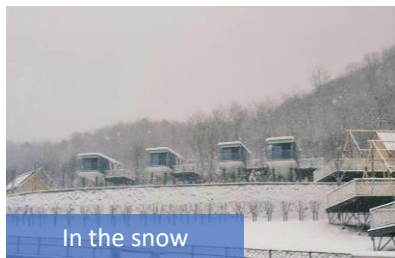
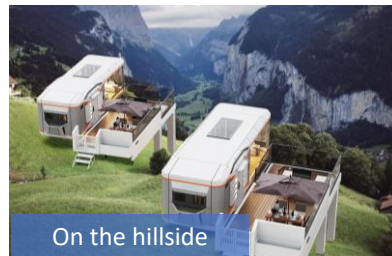
Standard Configurations

- 01 Aircraft aluminum exterior panel
- 02 Ecological interior decoration material
- 03 Whole house intelligent control system (WHCS)
- 04 Ambient lighting
- 05 Air conditioner
- 06 High-end laminate flooring
- 07 Stereo system
- 08 Elec remote control curtain

Optional Add-ons

- 01 Elec floor heating
- 02 Pipe frost protection (Elec heat)
- 03 Audio visual equipment (Projector)
- 04 2nd floor terrace
- 05 Furniture

PRODUCT APPLICATION SCENARIOS





PRODUCT LINES

ARK HOMES Series

- E5
- E6
- E7
- E8
- C90
- S10
- RT

ARK HOMES SERIES

E5

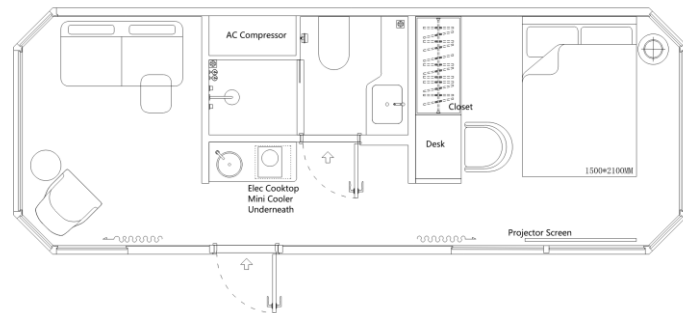
Dimension: 28.9 ft Length × 10.8 ft Width × 10.5 ft Height

Area: 312.6 sf

Layout: Living Room, Bedroom, Kitchen, Barcounter, Bathroom

Building Weight: around 15500 lbs

MAX Power: 15.6 KW



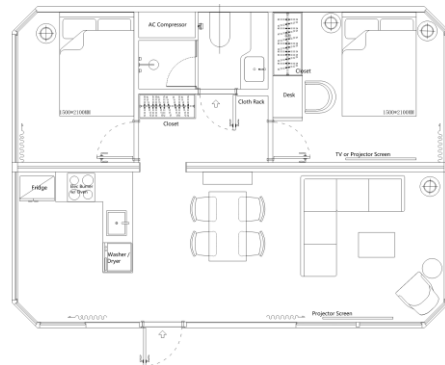
Item	Configuration List
Main Structure	Hot-dip galvanized steel frame structure, Exterior panels (Aircraft aluminum panel with fluorocarbon coating), Thermal insulation (High-density Polyurethane Insulation), Panoramic wall curtain glass, Door with intelligent lock
Interior Configuration	Suspended ceiling (bamboo charcoal fiberboard), Interior wall (finishes bamboo charcoal fiberboard), Interior flooring (composite wood flooring), Curtains (curtain panels), Wash basin (quartz stone countertop / ceramic wash basin), Bathroom mirror, Clothes rack (stainless steel material), Elec panel + circuit breaker, Remote control lighting system
Bathroom Configuration	Toilet, Bath shower, Washbasin, Faucet, Paper towel holder, Towel rack, Shower shelf
Basic Appliances	Ducted air conditioner, Elec instant water heater
★ Optional ★	Intelligent voice control system, Pipe frost protection, Projector, Electric towel drying rack, Elec underfloor heating, High-end bed, Leisure sofa
★ Note ★	Customer customization available



E6

ARK HOMES SERIES

Dimension: 28.9 ft Length × 20.7 ft Width × 10.5 ft Height
Area: 600 sf
Layout: Living Room, Bedroom, Kitchen, Bar counter, Bathroom
Building Weight: around 30000 lbs



Item	Configuration List
Main Structure	Hot-dip galvanized steel frame structure, Exterior panels (Aircraft aluminum panel with fluorocarbon coating), Thermal insulation (High-density Polyurethane Insulation), Panoramic wall curtain glass, Door with intelligent lock
Interior Configuration	Suspended ceiling (bamboo charcoal fiberboard), Interior wall (finishes bamboo charcoal fiberboard), Interior flooring (composite wood flooring), Curtains (curtain panels), Wash basin (quartz stone countertop / ceramic wash basin), Bathroom mirror, Clothes rack (stainless steel material), Elec panel + circuit breaker, Remote control lighting system
Bathroom Configuration	Toilet, Bath shower, Washbasin, Faucet, Paper towel holder, Towel rack, Shower shelf
Basic Appliances	Ducted air conditioner, Elec instant water heater
★ Optional ★	Intelligent voice control system, Pipe frost protection, Projector, Electric towel drying rack, Elec underfloor heating, High-end bed, Leisure sofa
★ Note ★	Customer customization available



E7

Dimension: 37.7 ft Length × 10.8 ft Width × 10.5 ft Height

Area: 410 sf

Layout: Living Room, Bedroom, Kitchen, Bar counter, Bathroom

Building Weight: around 21,000 lbs

MAX Power: 17.6 KW



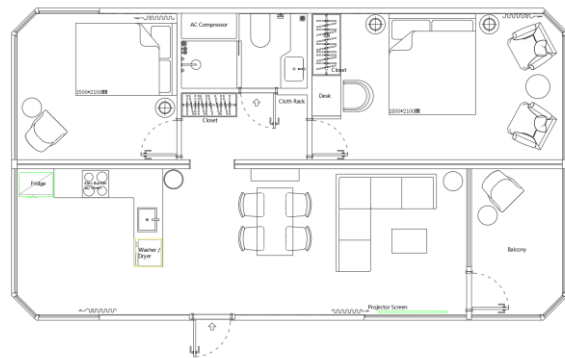
Item	Configuration List
Main Structure	Hot-dip galvanized steel frame structure, Exterior panels (Aircraft aluminum panel with fluorocarbon coating), Thermal insulation (High-density Polyurethane Insulation), Panoramic wall curtain glass, Door with intelligent lock
Interior Configuration	Suspended ceiling (bamboo charcoal fiberboard), Interior wall (finishes bamboo charcoal fiberboard), Interior flooring (composite wood flooring), Curtains (curtain panels), Wash basin (quartz stone countertop / ceramic wash basin), Bathroom mirror, Clothes rack (stainless steel material), Elec panel + circuit breaker, Remote control lighting system
Bathroom Configuration	Toilet, Bath shower, Washbasin, Faucet, Paper towel holder, Towel rack, Shower shelf
Basic Appliances	Ducted air conditioner, Elec instant water heater
★ Optional ★	Intelligent voice control system, Pipe frost protection, Projector, Electric towel drying rack, Elec underfloor heating, High-end bed, Leisure sofa
★ Note ★	Customer customization available



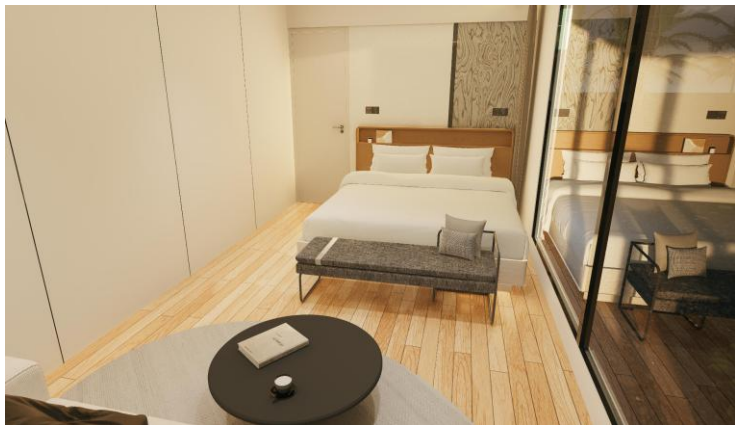
E8

ARK HOMES SERIES

Dimension: 37.7 ft Length × 22.7 ft Width × 10.5 ft Height
 Area: 860 sf
 Layout: Living Room, Bedroom, Kitchen, Bar counter, Bathroom
 Building Weight: around 40,000 lbs



Item	Configuration List
Main Structure	Hot-dip galvanized steel frame structure, Exterior panels (Aircraft aluminum panel with fluorocarbon coating), Thermal insulation (High-density Polyurethane Insulation), Panoramic wall curtain glass, Door with intelligent lock
Interior Configuration	Suspended ceiling (bamboo charcoal fiberboard), Interior wall (finishes bamboo charcoal fiberboard), Interior flooring (composite wood flooring), Curtains (curtain panels), Wash basin (quartz stone countertop / ceramic wash basin), Bathroom mirror, Clothes rack (stainless steel material), Elec panel + circuit breaker, Remote control lighting system
Bathroom Configuration	Toilet, Bath shower, Washbasin, Faucet, Paper towel holder, Towel rack, Shower shelf
Basic Appliances	Ducted air conditioner, Elec instant water heater
★ Optional ★	Intelligent voice control system, Pipe frost protection, Projector, Electric towel drying rack, Elec underfloor heating, High-end bed, Leisure sofa
★ Note ★	Customer customization available



S10

ARK HOMES SERIES

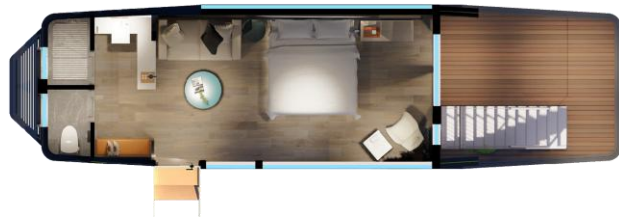
Dimension: 41 ft Length × 11.5 ft Width × 11.2 ft Height

Area: 470 sf

Layout: Living Room, Bedroom, Kitchen, Bar counter, Bathroom, Balcony,
2nd floor Terrace

Building Weight: around 29800 lbs

MAX Power: 17.6 KW



Item	Configuration List
Main Structure	Steel structure, Exterior panels (aircraft aluminum panel with fluorocarbon coating), Thermal insulation (polyurethane insulation), Exterior glazing, Entry door (smart access control), Balcony door (swing door), Window & screening, Home unit support
Interior Configuration	Ceiling (high-end bamboo charcoal fiberboard), Walls (high-end bamboo charcoal fiberboard), Illuminated backdrop, Floor (high-grade laminated wood flooring), Indoor light effects (spotlights + strip lights), Outdoor waterproof light strip, Remote control curtains, Switch panels, Smoke detector, Elec panel
2 nd Floor Terrace Configuration	Awning, Railing, Ambient lighting, Stairs
Bathroom Configuration	Toilet, Bath shower, Washbasin, Faucet, Paper towel holder, Towel rack, Shower shelf, mirror
Equipment & Appliances	Ducted air conditioner, Instant water heater
Standard Features	Intelligent voice control system, Pipe frost protection, Wine cup holder, Clothes rack, Elec water kettle, Storage Bench
★ Optional ★	Projector, Electric towel drying rack, Elec underfloor heating, High-end bed, Leisure sofa
★ Note ★	Customer customization available



C90 With Balcony

Dimension: 38.1 ft Length × 10.8 ft Width × 11.2 ft Height

Area: 409 sf

Layout: Living Room, Bedroom, Bar counter, Bathroom, Balcony

Building Weight: around 21000 lbs

MAX Power: 17.6 KW



Item	Configuration List
Main Structure	Steel Structure, Exterior panels (aircraft aluminum panel with fluorocarbon coating), Thermal insulation (polyurethane insulation), Exterior glazing, Skylight glass, Entry door (smart access control), Balcony door (swing door), Window & screening, Home unit support
Interior Configuration	Ceiling (high-end bamboo charcoal fiberboard), Walls (high-end bamboo charcoal fiberboard), Floor (high-grade laminated wood flooring), Indoor light effects (spotlights + strip lights), Outdoor waterproof light strip, Remote control curtains, Switch panels, Smoke detector, Elec panel, Equipment cabinet
Bathroom Configuration	Toilet, Bath shower, Washbasin, Faucet, Paper towel holder, Towel rack, Shower shelf, mirror
Basic Appliances	Ducted air conditioner, Instant water heater
Standard Features	Intelligent voice control system, Pipe frost protection, Clothes rack, Elec water kettle, Certificate of Conformity, Instruction Manual, Product Transportation Protection
★ Optional ★	Projector, Electric towel drying rack, Elec underfloor heating, High-end bed, Leisure sofa
★ Note ★	Customer customization available



RT Trailer

ARK HOMES SERIES

Dimension: 19 ft Length × 7.1 ft Width × 8 ft Height
Area: 135 sf
Layout: Living Room, Bedroom, Bathroom
Building Weight: around 6,614 lbs
MAX Power: 13.8 KW



Item	Configuration List
Main Structure	Hot-dip galvanized steel frame structure, Exterior panels (Aircraft aluminum panel with fluorocarbon coating), Thermal insulation (High-density Polyurethane Insulation), Door with intelligent lock
Interior Configuration	Suspended ceiling (bamboo charcoal fiberboard), Interior wall (finishes bamboo charcoal fiberboard), Interior flooring (composite wood flooring), Curtains (curtain panels), Wash basin (quartz stone countertop / ceramic wash basin), Bathroom mirror, Clothes rack (stainless steel material), Elec panel + circuit breaker, Remote control lighting system
Bathroom Configuration	Toilet, Bath shower, Washbasin, Faucet, Paper towel holder, Towel rack, Shower shelf
Basic Appliances	AC, Elec instant water heater
★ Optional ★	Intelligent voice control system, Pipe frost protection, Projector, Electric towel drying rack, Elec underfloor heating, High-end bed, Leisure sofa
★ Note ★	Customer customization available



PRODUCT LINES

Apple Cabin Series

- H10
- B70
- B80
- M10B



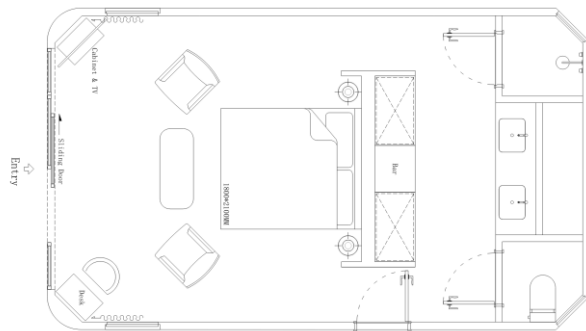
H10

Designed for Luxury Hotel Key

Dimension: 26.6 ft Length × 15.8 ft Width × 9.4 ft Height

Area: 420 sf

Layout: Living Room, Bedroom, Bathroom



Item	Configuration List
Main Structure	Hot-dip galvanized steel frame structure, Exterior panels (Aircraft aluminum panel with fluorocarbon coating), Thermal insulation (High-density Polyurethane Insulation), Panoramic wall curtain glass, Door with intelligent lock
Interior Configuration	Suspended ceiling (bamboo charcoal fiberboard), Interior wall (finishes bamboo charcoal fiberboard), Interior flooring (composite wood flooring), Curtains (curtain panels), Wash basin (quartz stone countertop / ceramic wash basin), Bathroom mirror, Clothes rack (stainless steel material), Elec panel + circuit breaker, Remote control lighting system
Bathroom Configuration	Toilet, Bath shower, Washbasin, Faucet, Paper towel holder, Towel rack, Shower shelf
Basic Appliances	Ducted air conditioner, Elec Instant Water Heater
★ Optional ★	Intelligent voice control system, Pipe frost protection, Projector, Electric towel drying rack, Elec underfloor heating, High-end bed, Leisure sofa
★ Note ★	Customer customization available





B70

Dimension: 32.8 ft Length × 10.8 ft Width × 10.5 ft Height

Area: 355 sf

Layout: Multi purpose use, such as office, sales room, lounge or living space

Building Weight: around 15,000 lbs



CATEGORY	CONFIGURATION LIST
Main structure	Steel structure frame, exterior decoration panel, thermal insulation (100mm polyurethane insulation layer), external glass, entrance door (high-grade aluminum alloy door)
Built-in configuration	Ceiling (bamboo charcoal fiberboard), wall (bamboo charcoal fiberboard), floor (PVC composite floor), indoor light effect (downlight + linear light), outdoor light effect (waterproof light belt), curtain (manual curtain), background music, socket panel (brand switch panel)
Equipment	Air conditioning
★ Optional ★	Floor heating (electric floor heating), water pipe anti-freezing
★ Remark ★	Open customer customization requirements (specific solutions need to be discussed)

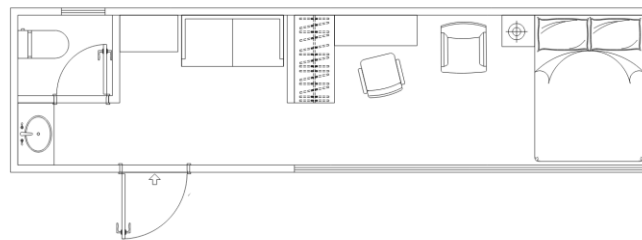
B80

Dimension: 28.8 ft Length × 7.3 ft Width × 10.5 ft Height

Area: 210 sf

Layout: Living Room, Bedroom, Bathroom

Building Weight: around 15,000 lbs



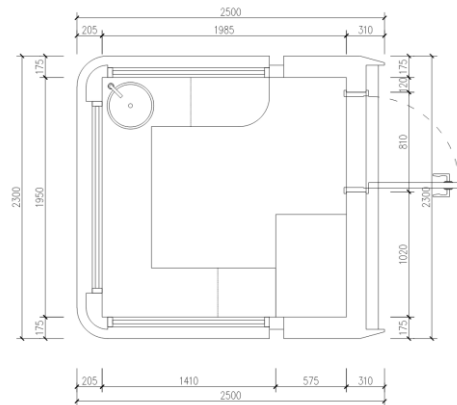
CATEGORY	CONFIGURATION LIST
Main structure	Steel structure frame, exterior decoration panel, thermal insulation (100mm polyurethane insulation layer), external glass, entrance door (high-grade aluminum alloy door)
Built-in configuration	Ceiling (bamboo charcoal fiberboard), wall (bamboo charcoal fiberboard), floor (PVC composite floor), indoor light effect (downlight + linear light), outdoor light effect (waterproof light belt), curtain (manual curtain), background music, socket panel (brand switch panel)
Equipment	Air conditioning
★ Optional ★	Floor heating (electric floor heating), water pipe anti-freezing
★ Remark ★	Open customer customization requirements (specific solutions need to be discussed)

M10B

Dimension: 7 ft Length × 8.2 ft Width × 8 ft Height

Area: 58 sf

Layout: Barcounter



Item	Configuration List
Main Structure	Hot-dip galvanized steel frame structure, Exterior panels (Aircraft aluminum panel with fluorocarbon coating), Thermal insulation (High-density Polyurethane Insulation), Door
Interior Configuration	Suspended ceiling (bamboo charcoal fiberboard), Interior wall (finishes bamboo charcoal fiberboard), Interior flooring (composite wood flooring), Curtains (curtain panels), Wash basin, Elec panel + circuit breaker
★ Optional ★	
★ Note ★	Customer customization available



PRODUCT LINES

ADU Series

- N50 Cabin
- N60 Cabin
- N70 Cabin

ADU SERIES

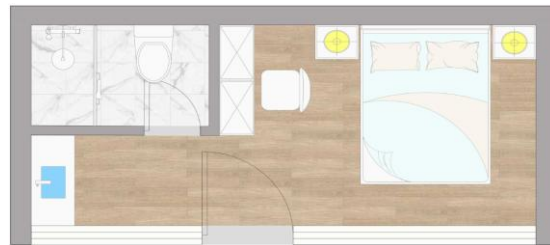
N50 Cabin

Accessory Dwelling Unit

Dimension: 24.6 ft Length × 10.8 ft Width × 10.5 ft Height

Area: 265 sf

Layout: Living Room, Bedroom, Bathroom



Item	Configuration List
Main Structure	Hot-dip galvanized steel frame structure, Exterior (Multi choice for Exterior finishes, such as stucco, cement board or wood siding), Thermal insulation (High-density Polyurethane Insulation), Panoramic wall curtain glass, Door with intelligent lock
Interior Configuration	Suspended ceiling (bamboo charcoal fiberboard), Interior wall (finishes bamboo charcoal fiberboard), Interior flooring (composite wood flooring), Curtains (curtain panels), Wash basin (quartz stone countertop / ceramic wash basin), Bathroom mirror, Clothes rack (stainless steel material), Elec panel + circuit breaker, Remote control lighting system
Bathroom Configuration	Toilet, Bath shower, Washbasin, Faucet, Paper towel holder, Towel rack, Shower shelf
Basic Appliances	AC, Elec Instant Water Heater
★ Optional ★	Intelligent voice control system, Pipe frost protection, Projector, Electric towel drying rack, Elec underfloor heating, High-end bed, Leisure sofa
★ Note ★	Customer customization available

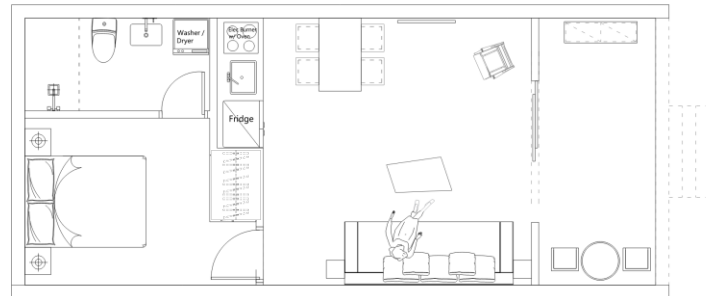
N60 Cabin

Accessory Dwelling Unit

Dimension: 35.5 ft Length × 15.8 ft Width × 10.5 ft Height

Area: 560 sf

Layout: Living Room, Kitchen, Bedroom, Bathroom



Item	Configuration List
Main Structure	Hot-dip galvanized steel frame structure, Exterior (Multi choice for Exterior finishes, such as stucco, cement board or wood siding), Thermal insulation (High-density Polyurethane Insulation), Panoramic wall curtain glass, Door with intelligent lock, Metal roof
Interior Configuration	Suspended ceiling (bamboo charcoal fiberboard), Interior wall (finishes bamboo charcoal fiberboard), Interior flooring (composite wood flooring), Curtains (curtain panels), Wash basin (quartz stone countertop / ceramic wash basin), Bathroom mirror, Clothes rack (stainless steel material), Elec panel + circuit breaker, Remote control lighting system, Kitchen cabinets
Bathroom Configuration	Toilet, Bath shower, Washbasin, Faucet, Paper towel holder, Towel rack, Shower shelf
Basic Appliances	AC, Elec Instant Water Heater, Refrigerator, Washer/dryer, Cooktop
★ Optional ★	Intelligent voice control system, Pipe frost protection, Projector, Electric towel drying rack, Elec underfloor heating, High-end bed, Leisure sofa
★ Note ★	Customer customization available

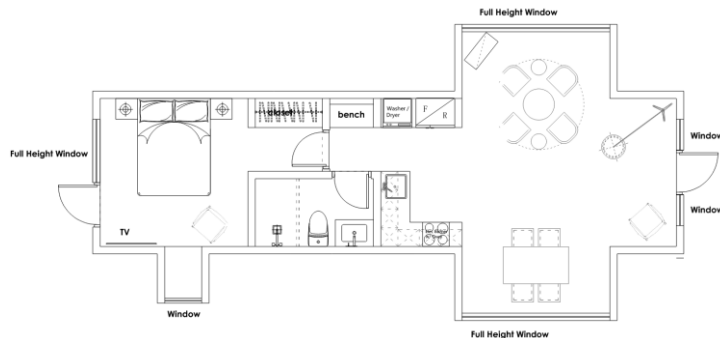
N70 Cabin

Accessory Dwelling Unit

Dimension: 40 ft Length × 20 ft Width × 10.5 ft Height

Area: 550 sf

Layout: Living Room, Kitchen, Bedroom, Bathroom



Item	Configuration List
Main Structure	Hot-dip galvanized steel frame structure, Exterior (Multi choice for Exterior finishes, such as stucco, cement board or wood siding), Thermal insulation (High-density Polyurethane Insulation), Panoramic wall curtain glass, Door with intelligent lock, Metal roof
Interior Configuration	Suspended ceiling (bamboo charcoal fiberboard), Interior wall (finishes bamboo charcoal fiberboard), Interior flooring (composite wood flooring), Curtains (curtain panels), Wash basin (quartz stone countertop / ceramic wash basin), Bathroom mirror, Clothes rack (stainless steel material), Elec panel + circuit breaker, Remote control lighting system, Kitchen cabinets
Bathroom Configuration	Toilet, Bath shower, Washbasin, Faucet, Paper towel holder, Towel rack, Shower shelf
Basic Appliances	AC, Elec Instant Water Heater, Refrigerator, Washer/dryer, Cooktop
★ Optional ★	Intelligent voice control system, Pipe frost protection, Projector, Electric towel drying rack, Elec underfloor heating, High-end bed, Leisure sofa
★ Note ★	Customer customization available





PRODUCT LINES

Economic Series

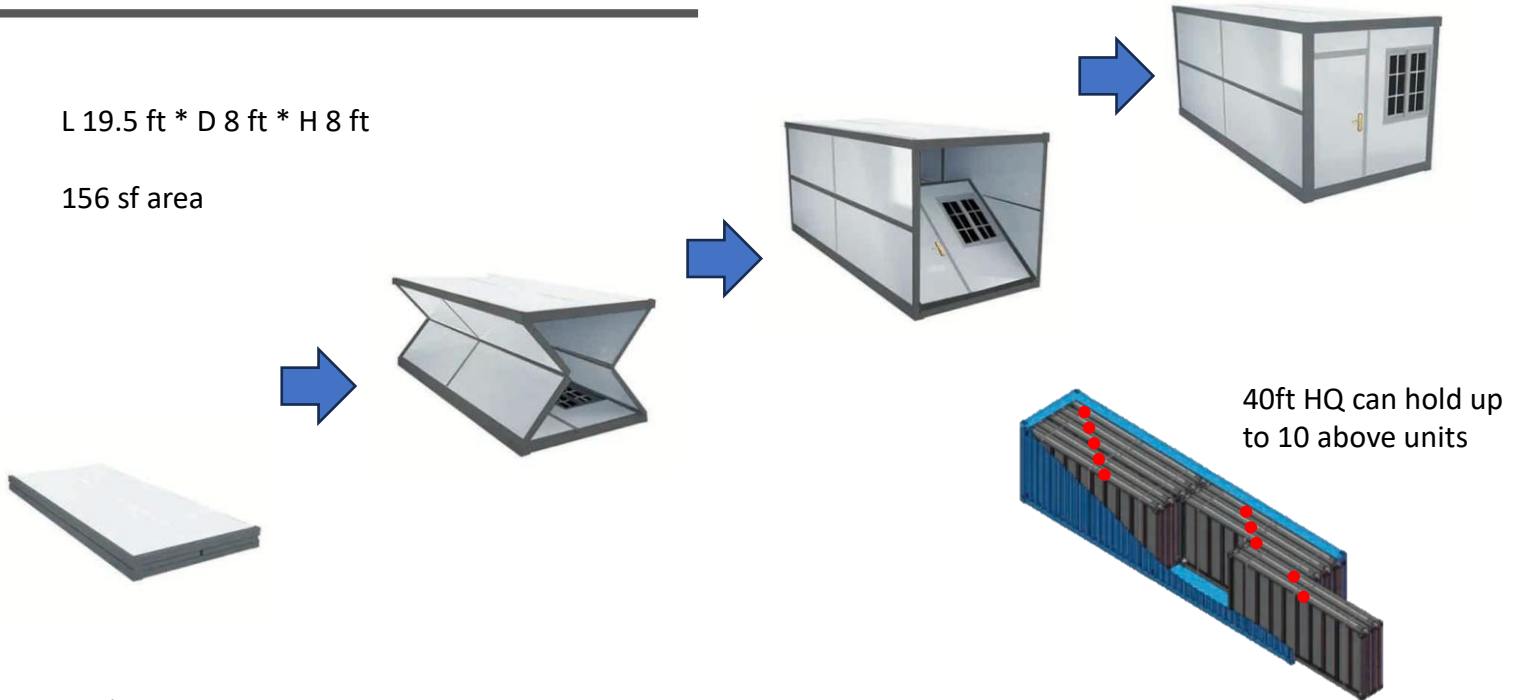
- Foldable Unit
- Staff Housing
- Expandable Cabin

ECONOMIC SERIES

Foldable Unit

L 19.5 ft * D 8 ft * H 8 ft

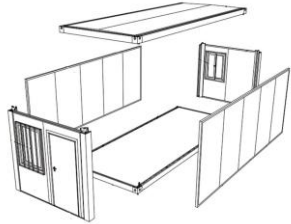
156 sf area



Staff Housing



Unit Main Structure



Prefabricated Parts



Staff Housing

Expandable Cabin

- Easy and fast installation
- 2 men, 15 min = 1 unit
- Dimensions: 20.7 ft by 19.4



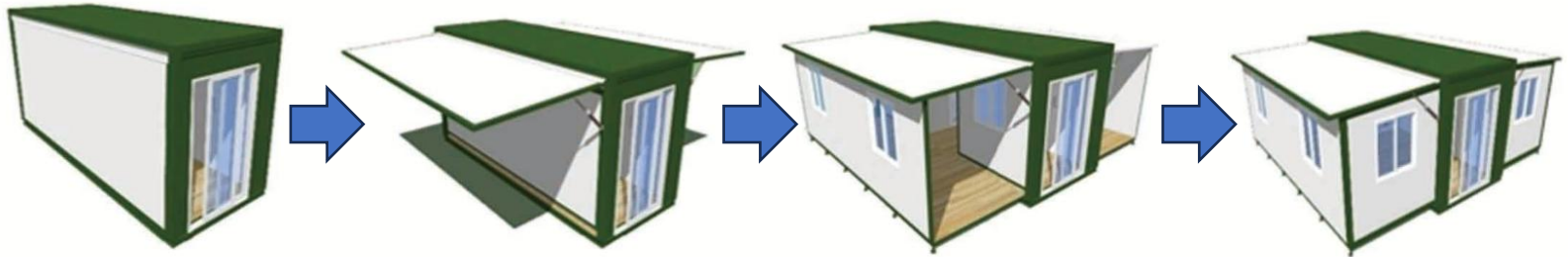
1B1B



2B1B



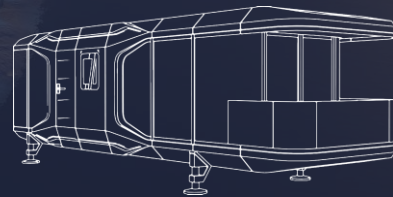
3B1B







CONTACT US



Phone (USA)

(201) 841-3850

Phone (Bahamas)

(242) 828-0666



Website

www.capsulevillas.net